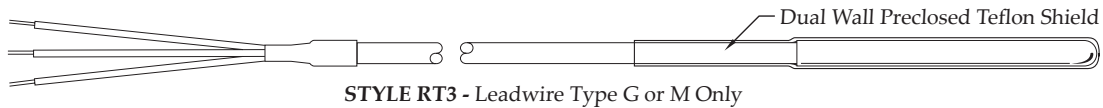
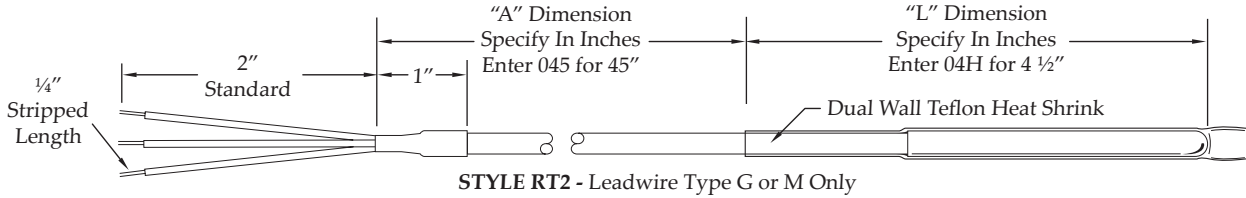
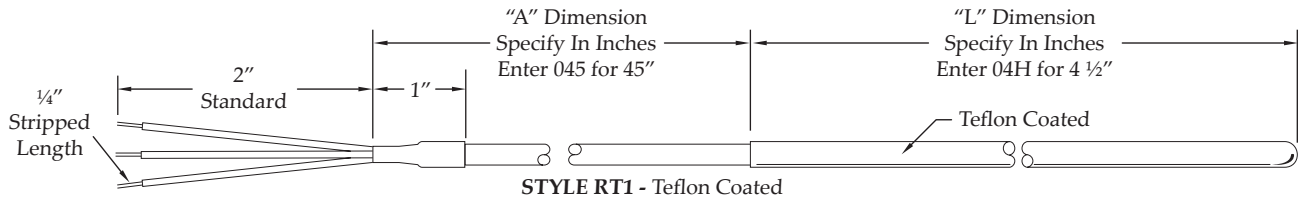


Resistance Temperature Detectors

TEFLON SHIELDED RTD



Code	Table 1: Element Type
A	100 ohm Platinum, Class B .00385 Coefficient
B	100 ohm Platinum, Class A .00385 Coefficient
E	1000 ohm Platinum, Class B .00385 Coefficient
G	100 ohm Platinum, Class B .00392 Coefficient

Code	Table 6: Lead Length ("A" Dimension)
	Specify in inches. See table on page 4 for codes.

Code	Table 2: Wiring Configuration
A	Single, 2 Wire
B	Single, 3 Wire
C	Single, 4 Wire
D	Dual, 4 Wire
E	Dual, 6 Wire (Minimum sheath diameter .250")

Code	Table 7: Leadwire Type
A	Stranded Fiberglass Singles
B	Stranded Fiberglass with Overall Fiberglass Jacket
C	Stranded Fiberglass with Stainless Steel Overbraid
D	Stranded Fiberglass with Stainless Steel Armor
E	Stranded Mica/Fiberglass Singles
F	Stranded Teflon Singles
G	Stranded Teflon with Overall Teflon Jacket
J	Stranded Teflon with Stainless Steel Overbraid
K	Stranded Teflon with Stainless Steel Armor
M	PVC with Mylar Shield

Code	Table 3: Sheath Material
4	304 Stainless Steel
6	316 Stainless Steel

Code	Table 4: Sheath Diameter		
	Nominal	RT1	RT2 / RT3
C	.188"	.200"	.220"
D	.250"	.262"	.285"

Code	Table 8: Terminations
0	2" Split Ends
1	#6 Spade Lug
2	BX Connector with #6 Spade Lug
3	Standard Plug
A	3/16" Quick Disconnect
B	3/16" Quick Disconnect, Insulated
C	1/4" Quick Disconnect
D	1/4" Quick Disconnect, Insulated
M	Mini Plug
X	Special, Specify

Code	Table 5: Sanitary Length ("L" Dimension)
	Specify in inches. See table on page 4 for codes.

Part Number Sequence

RT2-AB-4C04H-024FC

RT1, RT2 or RT3	Table 1	Table 2	Table 3	Table 4	Table 5	Table 6	Table 7	Table 8
Sensor Type & Style No.	Element Type	Wiring Configuration	Sheath Material	Sheath Diameter	"L" Sheath Length	"A" Lead Length	Leadwire Type	Terminations

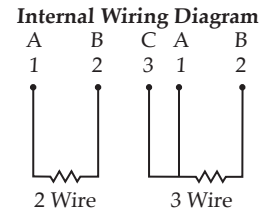
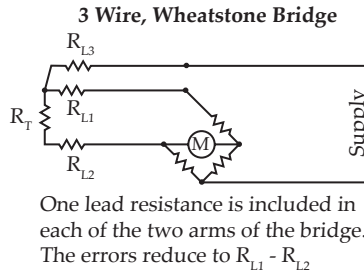
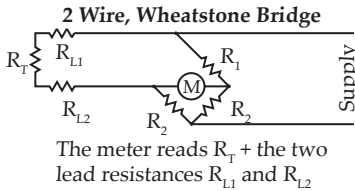
Resistance Temperature Detectors

SPECIFICATIONS

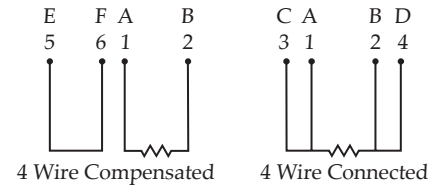
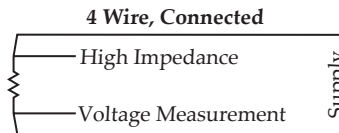
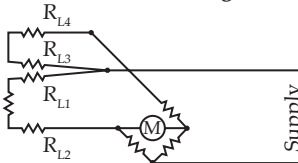
Available RTD Elements

Code	Element Type	Temperature Coefficient	Tolerance at 0°C
A	100 ohm Platinum	.00385	.1%
B	100 ohm Platinum	.00385	.06%
C	100 ohm Platinum	.00385	.03%
D	500 ohm Platinum	.00385	.1%
E	1000 ohm Platinum	.00385	.1%
F	2000 ohm Platinum	.00385	.1%
G	100 ohm Platinum	.00392	.1%
H	100 ohm Platinum	.00392	.03%
J	120 ohm Nickel	.00672	.5%
K	604 ohm Nickel Iron	.00520	.5%

Wiring Diagrams



4 Wire, Compensated Wheatstone Bridge



Code Definitions

"L" Dimensions				"B" Dimensions				"A" Dimensions		Fractional Dimension Letter Code					
"L" dimensions are specified in whole inches and a single alpha character which represents a fraction. Enter the three digit code as follows:				"B" dimensions are specified in fractions from 1/8" to 1". Use the single alpha character to indicate the tip length. Enter the code as follows:				"A" dimensions are specified in whole inches only. Enter the three digit code as follows:		1/16"	A	11/16"	L	Fraction	
										3/8"	B	3/4"	M		
3/16"	C	13/16"	N												
1/4"	D	7/8"	P												
5/16"	E	15/16"	R												
3/8"	F	1"	S												
3"	030	10 5/8"	10K	1/8"	B	5/8"	K	9"	009	7/16"	G	0	No		
4 1/2"	04H	12"	120	1/4"	D	3/4"	M	12"	012	1/2"	H				
6 1/4"	06D	15 3/8"	15F	3/8"	F	7/8"	P	36"	036	9/16"	J				
7 7/8"	07P	17 3/4"	17M	1/2"	H	1"	S	144"	144	5/8"	K				