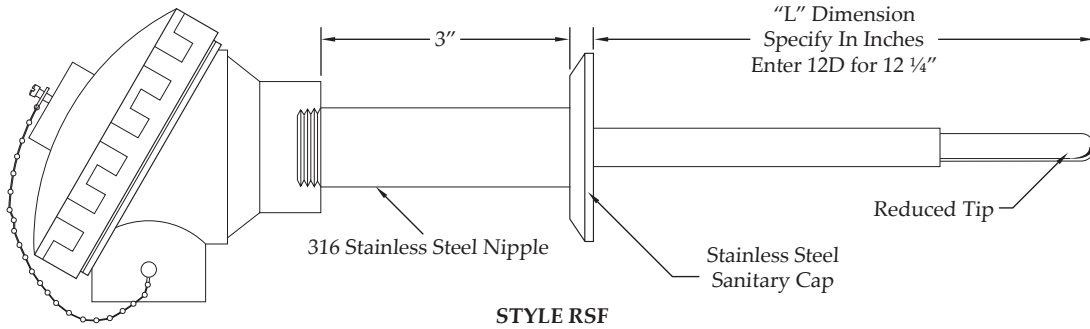


Resistance Temperature Detectors

RTD WITH SANITARY FITTING



Code	Table 1: Element Type
A	100 ohm Platinum, Class B .00385 Coefficient
B	100 ohm Platinum, Class A .00385 Coefficient
E	1000 ohm Platinum, Class B .00385 Coefficient
G	100 ohm Platinum, Class B .00392 Coefficient

Code	Table 6: Sanitary Cap Type
T	16A Plain Cap, Tri Clover
U	16A Plain Cap & 13H Hex Union Nut, Tri Clover
X	Special, Specify

Code	Table 2: Wiring Configuration
A	Single, 2 Wire
B	Single, 3 Wire (Minimum sheath diameter .156")
C	Single, 4 Wire (Minimum sheath diameter .188")
D	Dual, 4 Wire (Minimum sheath diameter .188")
E	Dual, 6 Wire (Minimum sheath diameter .250")

Code	Table 7: Sanitary Cap Size
1	1 1/2" (Tube Outer Diameter)
2	2" (Tube Outer Diameter)
3	2 1/2" (Tube Outer Diameter)
4	3" (Tube Outer Diameter)
X	Special, Specify

Code	Table 3: Sheath Material
6	316 Stainless Steel

Code	Table 4: Sheath Diameter
C	.188" or 3/16" O.D.
D	.250" or 1/4" O.D.

Code	Table 8: Terminal Head
A	Aluminum Screw Cover Head; 1/2" NPT Conduit Connection
W	White Polypropylene FDA Compliant Screw Cover Head; 1/2" NPT Conduit Connection

Code	Table 5: Immersion Length ("L" Dimension)
	Specify in inches. See table on page 4 for codes.

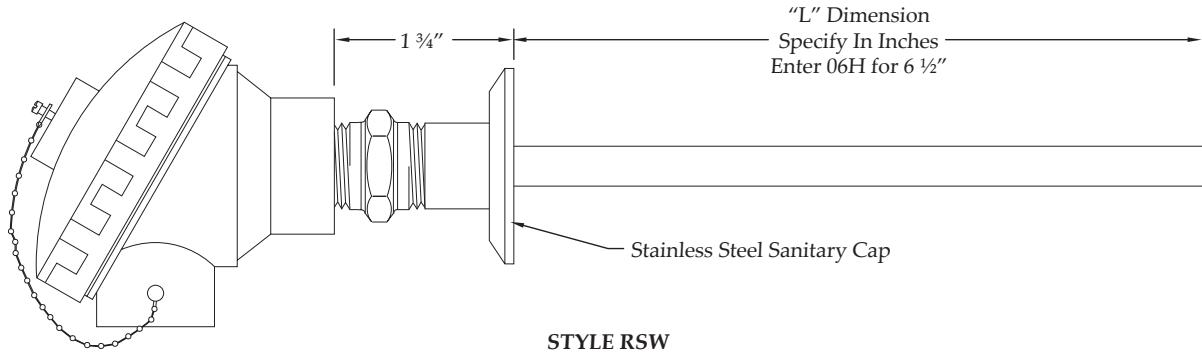
Part Number Sequence

RSF-HB-6D12D-T1W

RSF	-	H	B	-	6	D	12D	-	T	1	W
RSF		Table 1	Table 2		Table 3	Table 4	Table 5		Table 6	Table 7	Table 8
Sensor Type & Style No.		Element Type	Wiring Configuration		Sheath Material	Sheath Diameter	Immersion Length "L"		Cap Type	Cap Size	Terminal Head

Resistance Temperature Detectors

RTD WITH SANITARY WELLS CONNECTED



Code	Table 1: Element Type
A	100 ohm Platinum, Class B .00385 Coefficient
B	100 ohm Platinum, Class A .00385 Coefficient
E	1000 ohm Platinum, Class B .00385 Coefficient
G	100 ohm Platinum, Class B .00392 Coefficient

Code	Table 6: Sanitary Cap Type
T	16A Plain Cap, Tri Clover
U	16A Plain Cap & 13H Hex Union Nut, Tri Clover
X	Special, Specify

Code	Table 2: Wiring Configuration
A	Single, 2 Wire
B	Single, 3 Wire (Minimum sheath diameter .156")
C	Single, 4 Wire (Minimum sheath diameter .188")
D	Dual, 4 Wire (Minimum sheath diameter .188")
E	Dual, 6 Wire (Minimum sheath diameter .250")

Code	Table 7: Sanitary Cap Size
1	1 1/2" (Tube Outer Diameter)
2	2" (Tube Outer Diameter)
3	2 1/2" (Tube Outer Diameter)
4	3" (Tube Outer Diameter)
X	Special, Specify

Code	Table 3: Sheath Material
6	316 Stainless Steel

Code	Table 8: Terminal Head
A	Aluminum Screw Cover Head; 1/2" NPT Conduit Connection
W	White Polypropylene FDA Compliant Screw Cover Head; 1/2" NPT Conduit Connection

Code	Table 4: Sheath Diameter
H	.500 or 1/2" Outer Diameter

Code	Table 5: Immersion Length ("L" Dimension)
	Specify in inches. See table on page 4 for codes.

Part Number Sequence

RSW-ED-6H06H-T1W

RSW	-	E	D	-	6	H	06H	-	T	1	W
RSW		Table 1	Table 2		Table 3	Table 4	Table 5		Table 6	Table 7	Table 8
Sensor Type & Style No.		Element Type	Wiring Configuration		Sheath Material	Sheath Diameter	Immersion Length "L"		Cap Type	Cap Size	Terminal Head

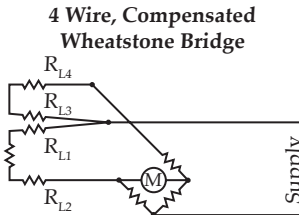
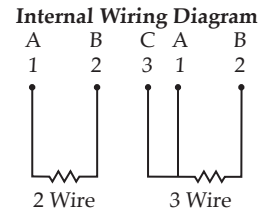
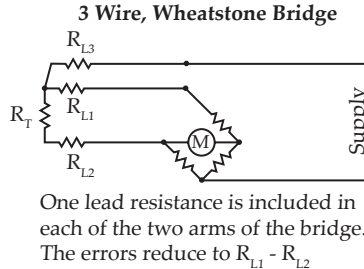
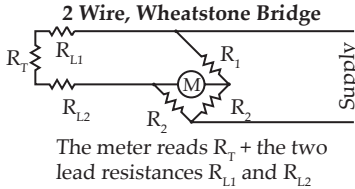
Resistance Temperature Detectors

SPECIFICATIONS

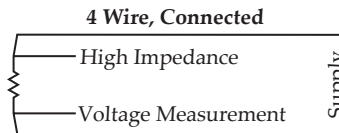
Available RTD Elements

Code	Element Type	Temperature Coefficient	Tolerance at 0°C
A	100 ohm Platinum	.00385	.1%
B	100 ohm Platinum	.00385	.06%
C	100 ohm Platinum	.00385	.03%
D	500 ohm Platinum	.00385	.1%
E	1000 ohm Platinum	.00385	.1%
F	2000 ohm Platinum	.00385	.1%
G	100 ohm Platinum	.00392	.1%
H	100 ohm Platinum	.00392	.03%
J	120 ohm Nickel	.00672	.5%
K	604 ohm Nickel Iron	.00520	.5%

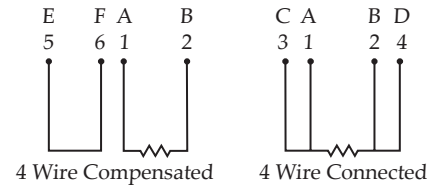
Wiring Diagrams



In this type R_{L3} and R_{L4} appear in one arm of the bridge. R_{L1} and R_{L2} appear in the other. Errors are $R_{L1} + R_{L2} - R_{L3} - R_{L4}$



Errors can be made negligible by having a very high input impedance amplifier.



Code Definitions

"L" Dimensions				"B" Dimensions				"A" Dimensions		Fractional Dimension Letter Code					
"L" dimensions are specified in whole inches and a single alpha character which represents a fraction. Enter the three digit code as follows:				"B" dimensions are specified in fractions from 1/8" to 1". Use the single alpha character to indicate the tip length. Enter the code as follows:				"A" dimensions are specified in whole inches only. Enter the three digit code as follows:		1/16"	A	11/16"	L	Fraction	
										1/8"	B	3/4"	M		
3/16"	C	13/16"	N												
1/4"	D	7/8"	P												
5/16"	E	15/16"	R												
3/8"	F	1"	S												
7/16"	G	0	No												
1/2"	H														
3/16"	J														
5/8"	K														
3"	030	10 5/8"	10K	1/8"	B	5/8"	K	9"	009	7/16"	G	0	No		
4 1/2"	04H	12"	120	1/4"	D	3/4"	M	12"	012	1/2"	H				
6 1/4"	06D	15 3/8"	15F	3/8"	F	7/8"	P	36"	036	9/16"	J				
7 7/8"	07P	17 3/4"	17M	1/2"	H	1"	S	144"	144	5/8"	K				